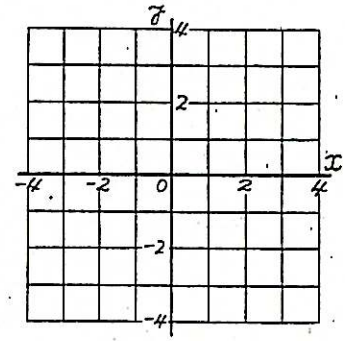


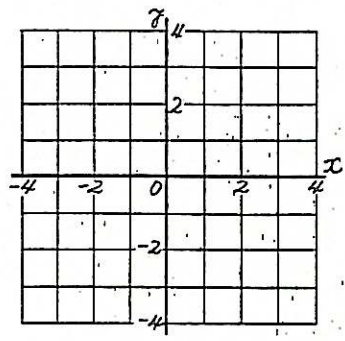
5. 式からグラフをつくる練習(正比例) 組 氏名 _____

◎ 次の式のグラフをかきなさい。

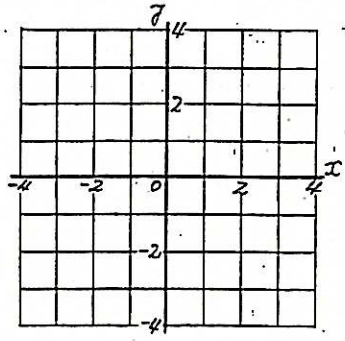
(1) $y = x$



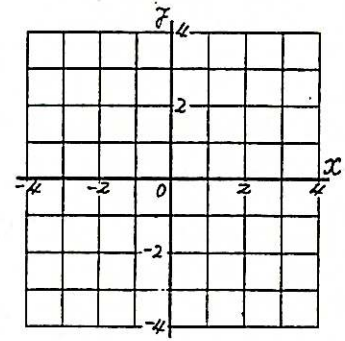
(2) $y = 2x$



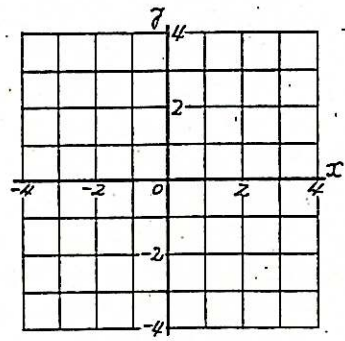
(3) $y = 3x$



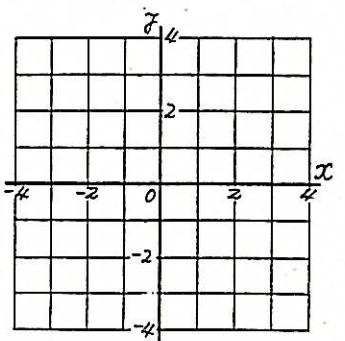
(4) $y = -2x$



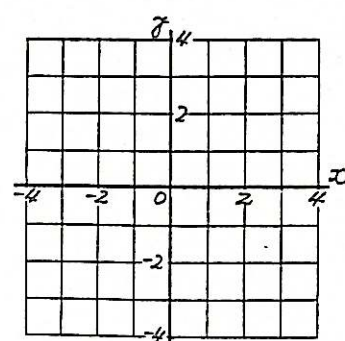
(5) $y = -\frac{1}{2}x$



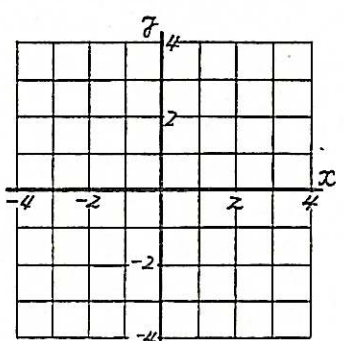
(6) $y = -x$



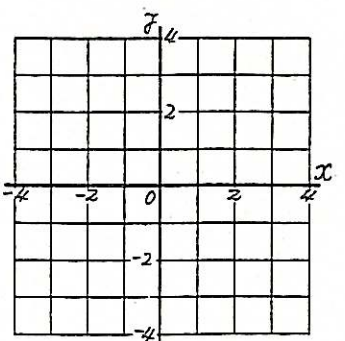
(7) $y = 1.5x$



(8) $y = -\frac{3}{2}x$



(9) $y = \frac{2}{3}x$

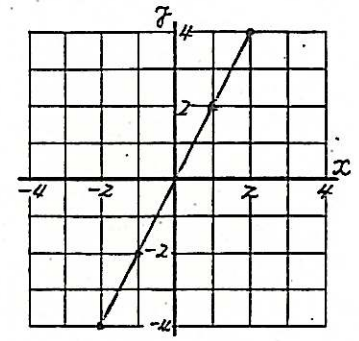


* 比例定数 a が分数のときは、分母の公倍数を代入した方がよい。

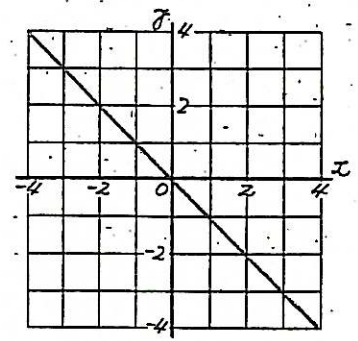
6. グラフから式をつくる練習(正比例) 組 氏名 _____

◎ 次のグラフから座標を読みとり、式をつくりなさい。

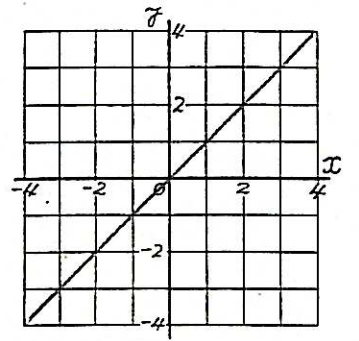
(1)



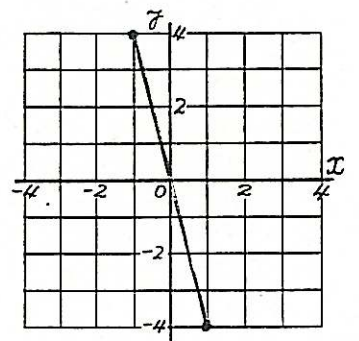
(2)



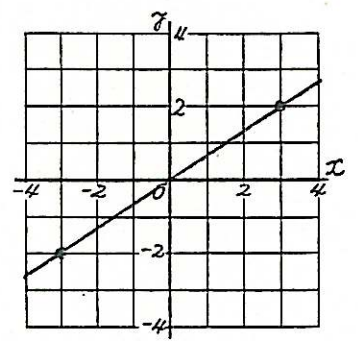
(3)



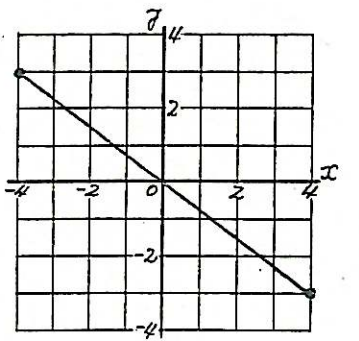
(4)



(5)



(6)



* $y = ax$ に、 x と y の値を代入し、 a を求める。