

1. 式から表をつくる練習(正比例)

組名 _____

◎ 正比例の式を見て、表を完成せよ。

(1) $y = 2x$

x	-3	-2	-1	0	1	2	3
y							

(2) $y = x$

x	-3	-2	-1	0	1	2	3
y							

(3) $y = 3x$

x	-3	-2	-1	0	1	2	3
y							

(4) $y = 5x$

x	-3	-2	-1	0	1	2	3
y							

(5) $y = -2x$

x	-3	-2	-1	0	1	2	3
y							

(6) $y = -x$

x	-3	-2	-1	0	1	2	3
y							

(7) $y = -4x$

x	-3	-2	-1	0	1	2	3
y							

(8) $y = -6x$

x	-3	-2	-1	0	1	2	3
y							

(9) $y = 1.5x$

x	-3	-2	-1	0	1	2	3
y							

(10) $y = \frac{2}{3}x$

x	-3	-2	-1	0	1	2	3
y							

(11) $y = -\frac{1}{2}x$

x	-3	-2	-1	0	1	2	3
y							

(12) $y = -\frac{3}{4}x$

x	-3	-2	-1	0	1	2	3
y							

2. 表から式をつくる練習(正比例)

組名 _____

◎ 正比例の表を見て、式をつくりなさい。

(1)

x	-3	-2	-1	0	1	2	3
y	-9	-6	-3	0	3	6	9

(2)

x	-3	-2	-1	0	1	2	3
y	3	2	1	0	-1	-2	-3

(3)

x	-3	-2	-1	0	1	2	3
y	6	4	2	0	-2	-4	-6

(4)

x	-3	-2	-1	0	1	2	3
y	-3	-2	-1	0	1	2	3

(5)

x	-3	-2	-1	0	1	2	3
y	-6	-4	-2	0	2	4	6

(6)

x	-3	-2	-1	0	1	2	3
y	12	8	4	0	-4	-8	-12

(7)

x	-3	-2	-1	0	1	2	3
y	-4.5	-3	-1.5	0	1.5	3	4.5

(8)

x	-3	-2	-1	0	1	2	3
y	-18	12	6	0	-6	-12	-18

◎ 表の (x, y) の値を、 $y = ax$ に代入して a の値を求め、式をつくれ。

(1)

x	-1	0	1	2
y	-2	0	2	4

(2)

x	-1	0	1	2
y	-5	0	5	10

(3)

x	-1	0	1	2
y	1	0	-1	-2

(4)

x	-1	0	1	2
y	$-\frac{1}{2}$	0	$\frac{1}{2}$	1

(5)

x	-1	0	1	2
y	1.5	0	-1.5	-3

(6)

x	-3	0	3	6
y	-2	0	-2	-4

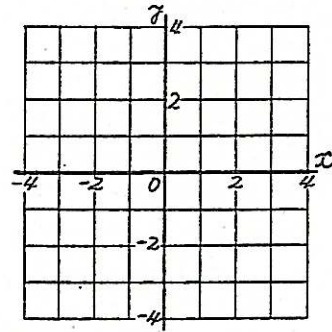
3. 表からグラフをつくる練習(正比例)

組名 _____

◎ 表をみて、点(座標)をかきこみなさい。グラフにきなさい。

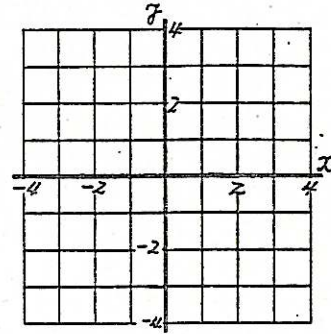
(1)

x	-2	-1	0	1	2
y	-4	-2	0	2	4



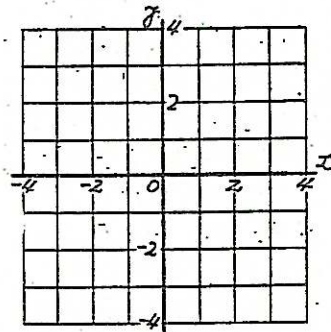
(2)

x	-2	-1	0	1	2
y	2	1	0	-1	-2



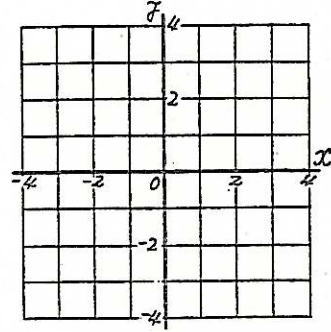
(3)

x	-2	-1	0	1	2
y	-6	-3	0	3	6



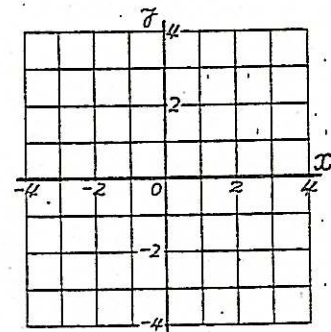
(4)

x	-2	-1	0	1	2
y	1	1/2	0	-1/2	-1



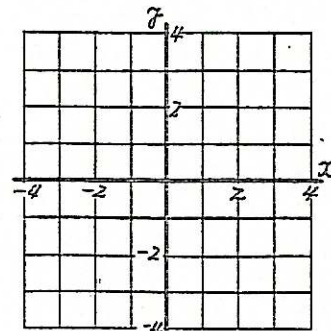
(5)

x	-3	-2	-1	0	1	2	3
y	-2	-4/3	-2/3	0	2/3	4/3	2



(6)

x	-4	-2	0	2	4
y	3	3/2	0	-3/2	-3

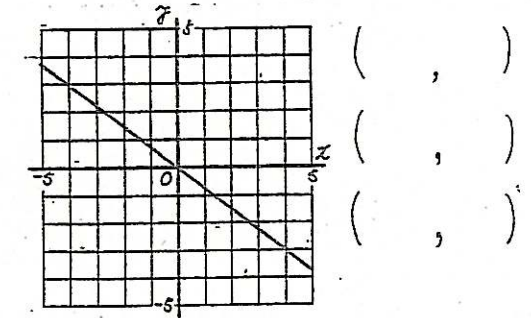
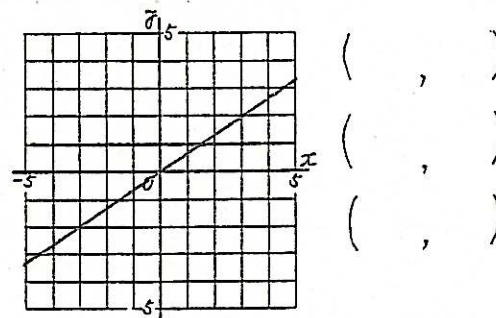
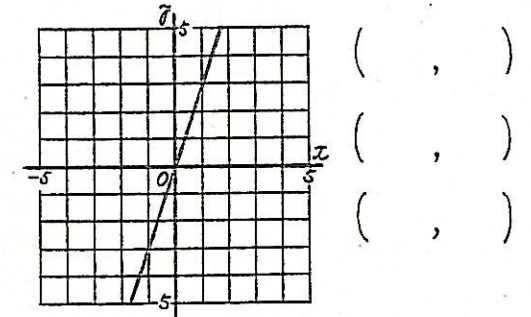
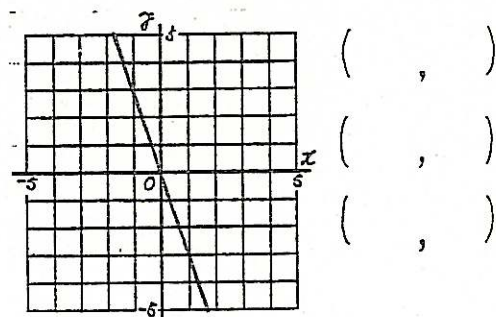
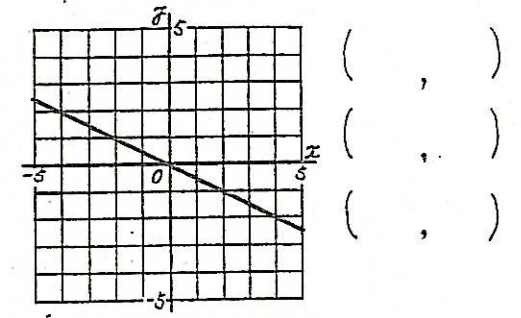
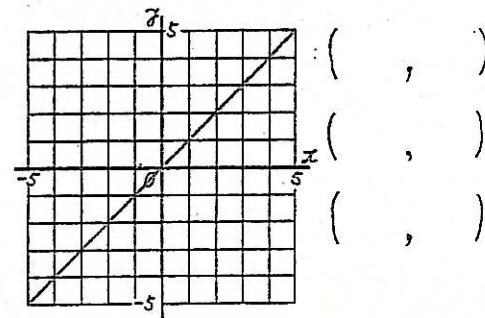
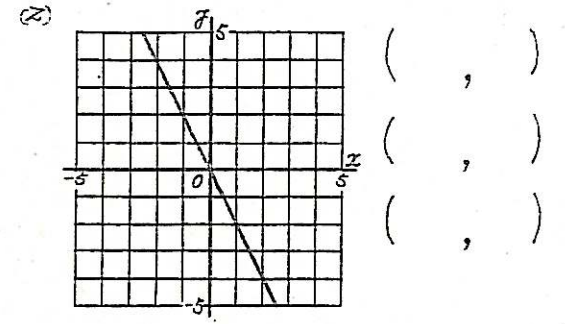
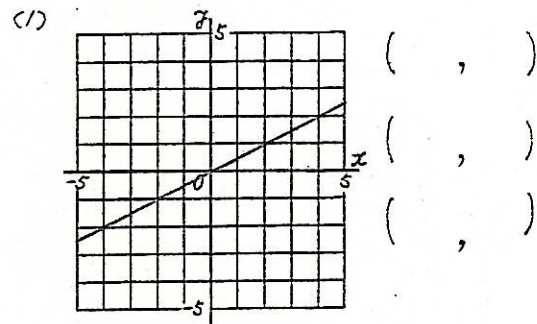


* (4)~(6)は、すべての座標がかけかわりではありません。

4. グラフから表をつくる練習

組名 _____

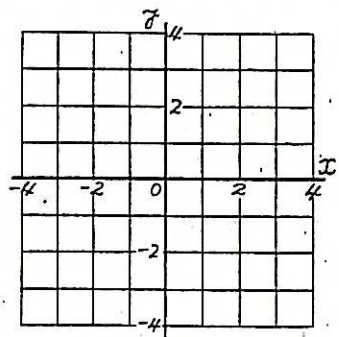
◎ グラフをみて、座標をよみ(,)にかきなさい。3つ書きなさい。



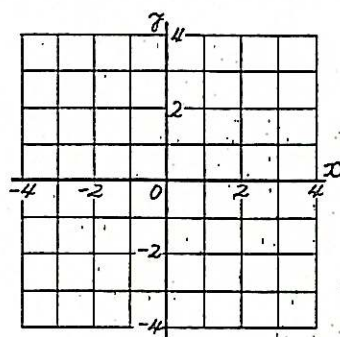
5. 式からグラフをつくる練習(正比例) 組 氏名 _____

◎ 次の式のグラフをかきなさい。

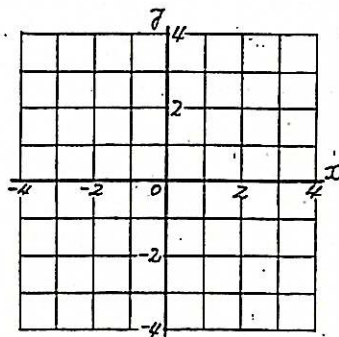
(1) $y = x$



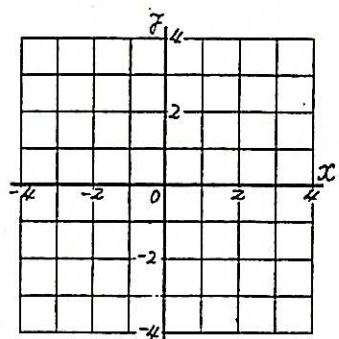
(2) $y = 2x$



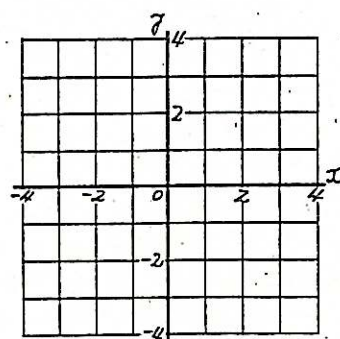
(3) $y = 3x$



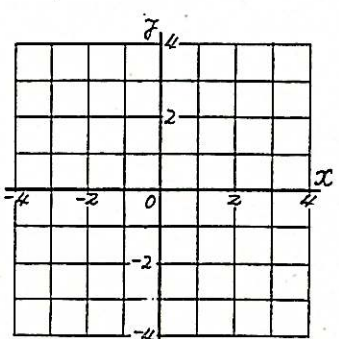
(4) $y = -2x$



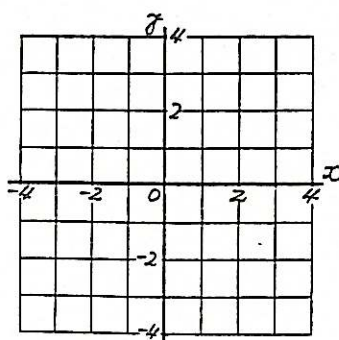
(5) $y = -\frac{1}{2}x$



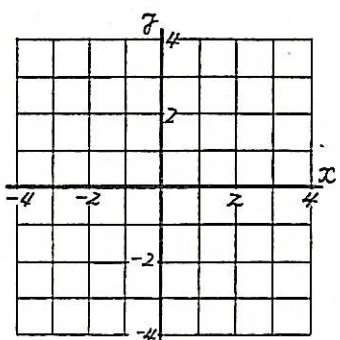
(6) $y = -x$



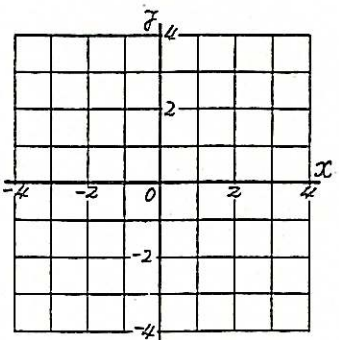
(7) $y = 1.5x$



(8) $y = -\frac{3}{2}x$



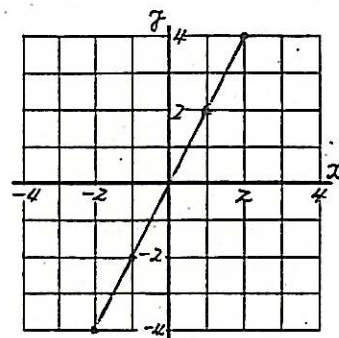
(9) $y = \frac{2}{3}x$



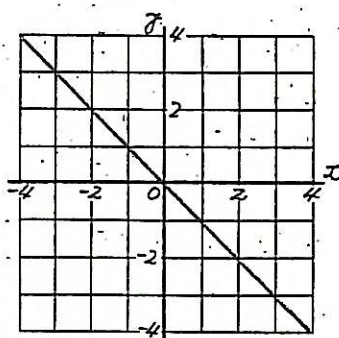
6. グラフから式をつくる練習(正比例) 組 氏名 _____

◎ 次のグラフから座標を読みとり、式をつくりなさい。

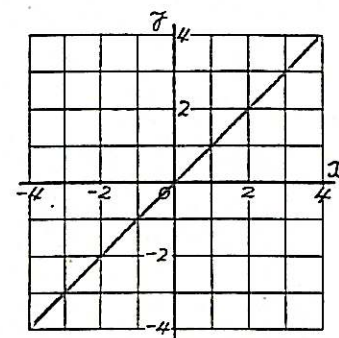
(1)



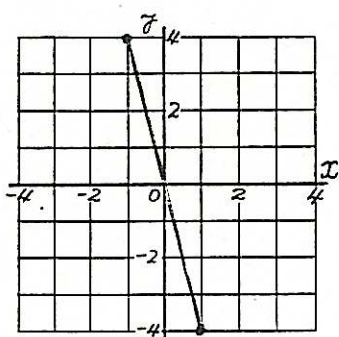
(2)



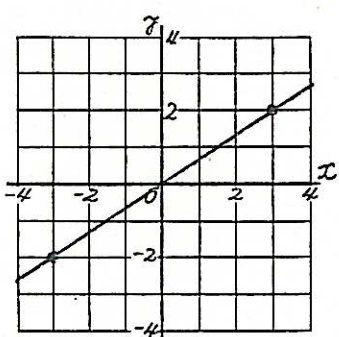
(3)



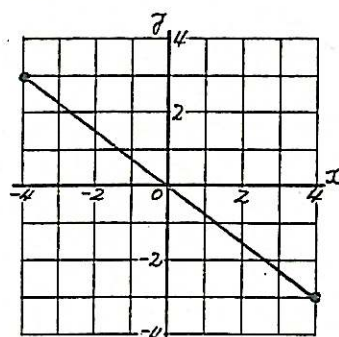
(4)



(5)



(6)



* 比例定数 a が分数のときは、分母の公倍数を代入した方がよい。

* $y = ax$ に、 x と y の値を代入し、 a を求める。